

TOWN OF  
**QUEEN CREEK**  
ARIZONA

*Welcome*

TO THE TOWN OF QUEEN CREEK, AZ

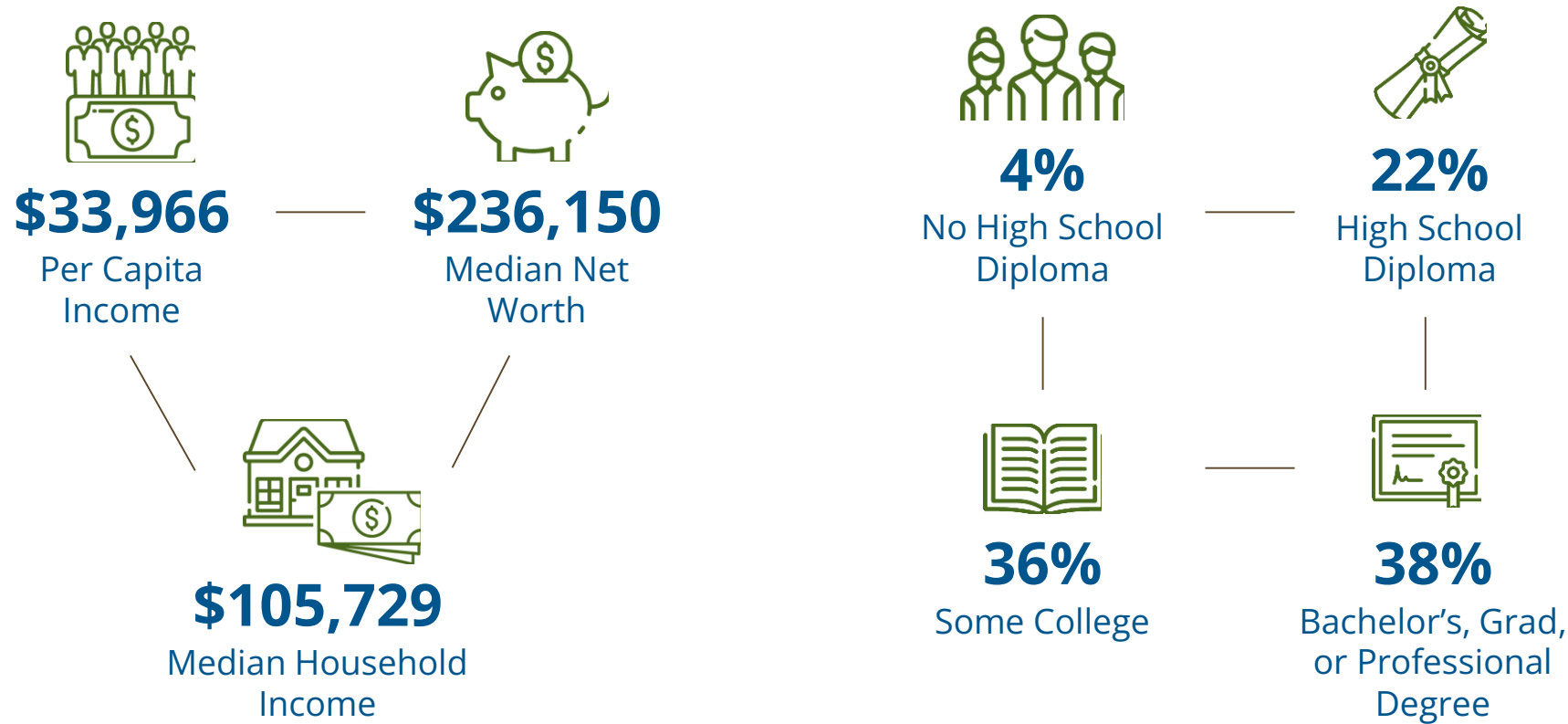
Strategically located. Available land for development. Highly educated workforce. Learn more about the world of possibilities awaiting you and your business when you

**INVESTTHEQC**

# DEMOGRAPHICS

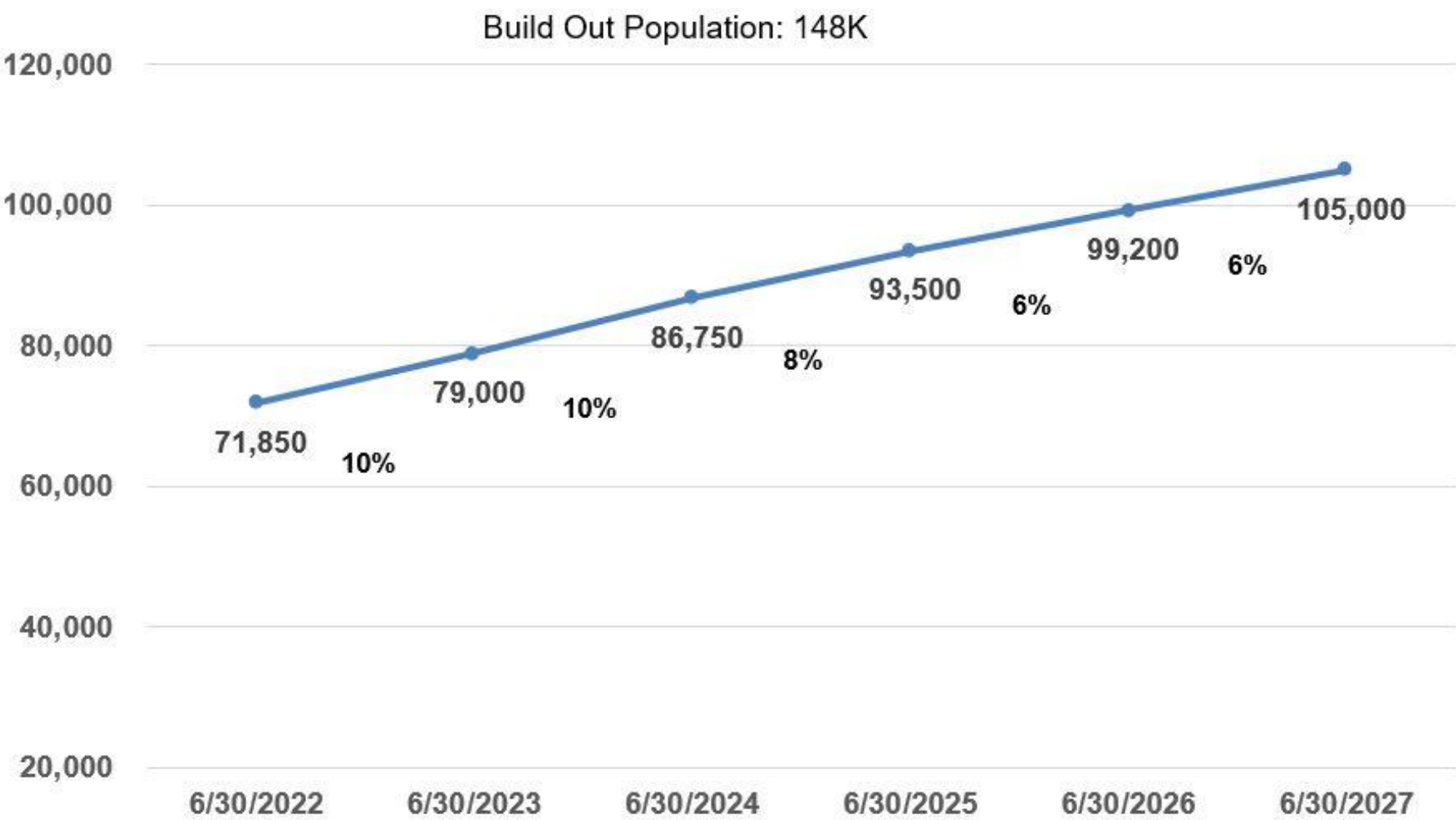
**INVESTTHEQC**

Young, well-educated, highly-skilled and family-oriented





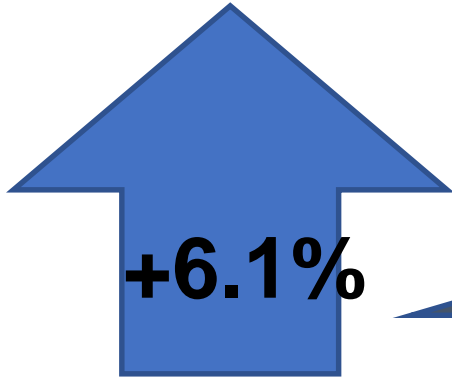
46% Population Increase in 5 Years (+33K)



# QUEEN CREEK DEMOGRAPHICS



POP. GROWTH



**QUEEN CREEK**  
Annual Growth  
(2012-2022)

**10x**  
FASTER THAN NATIONAL  
AVERAGE

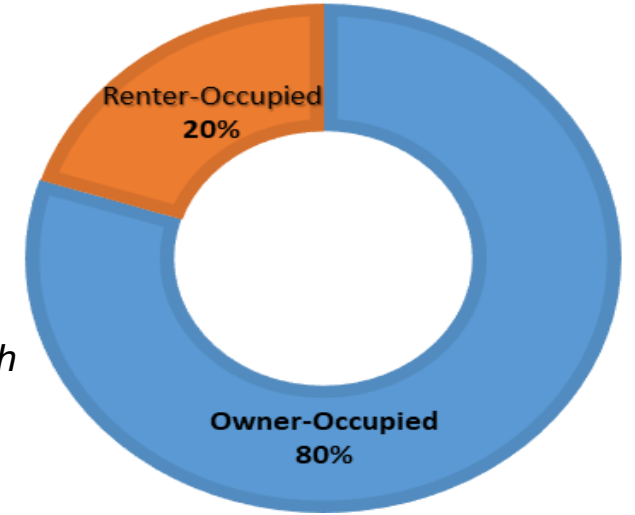


**NATIONAL**  
Avg. Annual  
Growth (2012-  
2022)

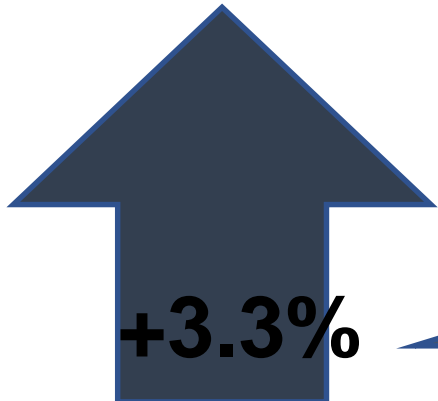


Owner vs. Renter  
Occupied  
Households

*Compared to Phoenix with  
44% renter vs. 56%  
owner, and the U.S. with  
36% renter vs. 64%  
owner.*

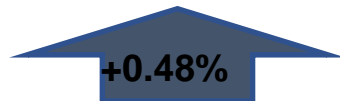


JOB GROWTH



**QUEEN CREEK**  
Annual Growth  
(2012-2022)

**7x**  
FASTER THAN NATIONAL  
AVERAGE



**NATIONAL**  
Avg. Annual Growth  
(2012-2022)



Average Age: 33.8

Average Income: \$133,472

Average Home Value: \$363,800

Average Commute Time: 32.7 minutes

# HOUSING PERMITS



Queen Creek is recognized as the best city in Arizona for millennials to thrive.

*2019, Zippia*

Queen Creek was named the best city in the western United States to raise a family.

*2022, Dwellics*

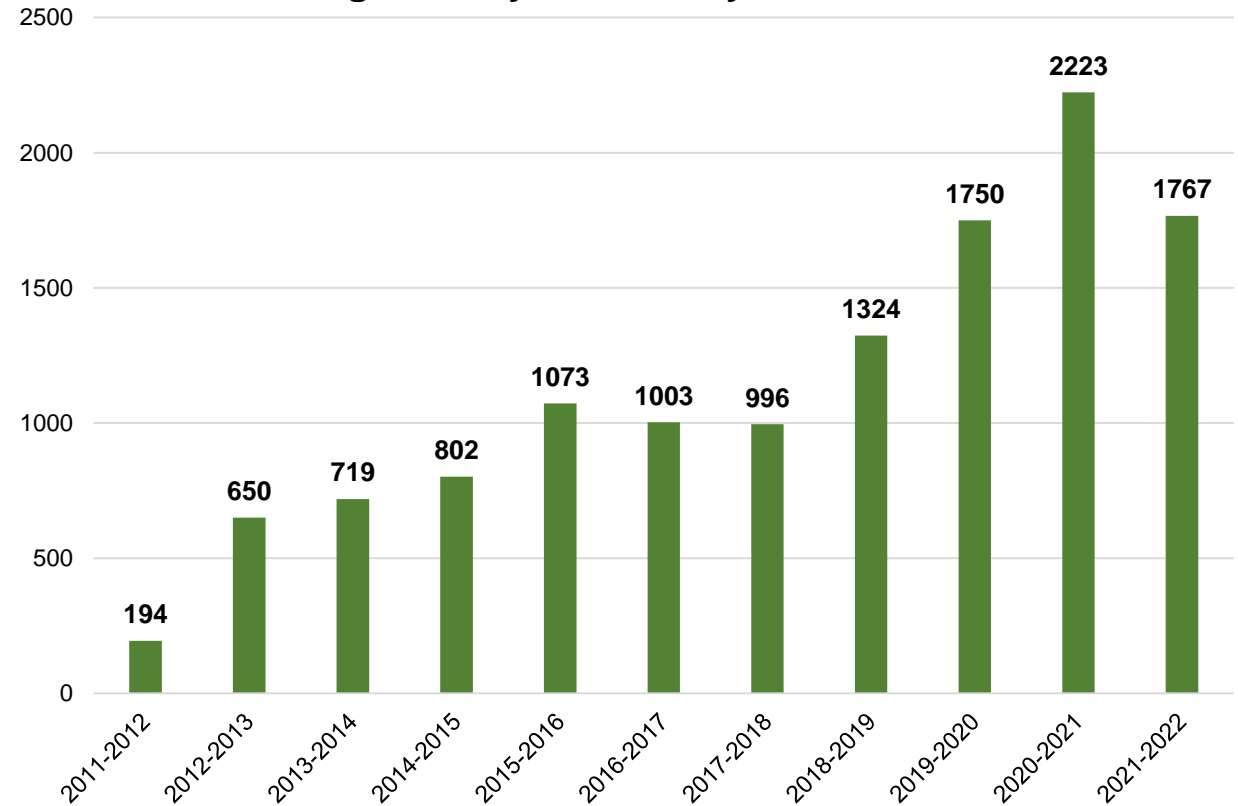
Queen Creek was named one of the top 10 suburbs to move to in the United States.

*2021, Homes.com*

Queen Creek was recognized as the Third Fastest Growing City in the U.S.

*2022, US Census Bureau*

**Single Family Permits- By Fiscal Year**







The top employers of Queen Creek residents are Intel and Boeing.

Manufacturing industry is 3<sup>rd</sup> largest for Queen Creek workers.

Top Employers for Queen Creek Residents Working Outside of Queen Creek

EMPLOYER NAME	SITE NAME	ADDRESS	CITY
1 Intel Corporation	Ocotillo Campus	4500 S. Dobson Rd., M/S OC4-007	Chandler
2 Intel Corporation	Chandler Campus	5000 W. Chandler Blvd., M/S CH7-323	Chandler
3 Boeing Co.	Mesa Plant	5000 E. McDowell Rd.	Mesa
4 State Farm Insurance	Marina Heights	300 E. Rio Salado Pkwy.	Tempe
5 Bank of America	Chandler-AZ1-800,801,804,805	2565 W. Chandler Blvd.	Chandler
6 Banner Health	Banner Baywood Medical Center	6644 Baywood	Mesa
7 City of Chandler	City Complex	175 S. Arizona Ave.	Chandler
8 Banner Health	Banner Desert Medical Center	1400 S. Dobson Rd./2145 W. Southern	Mesa
9 Dignity Health - Gilbert	Mercy Gilbert Medical Center	3555 S. Val Vista Dr.	Gilbert
10 PayPal, Inc. - Chandler	PayPal - Chandler	3000 W. One Payment Way	Chandler



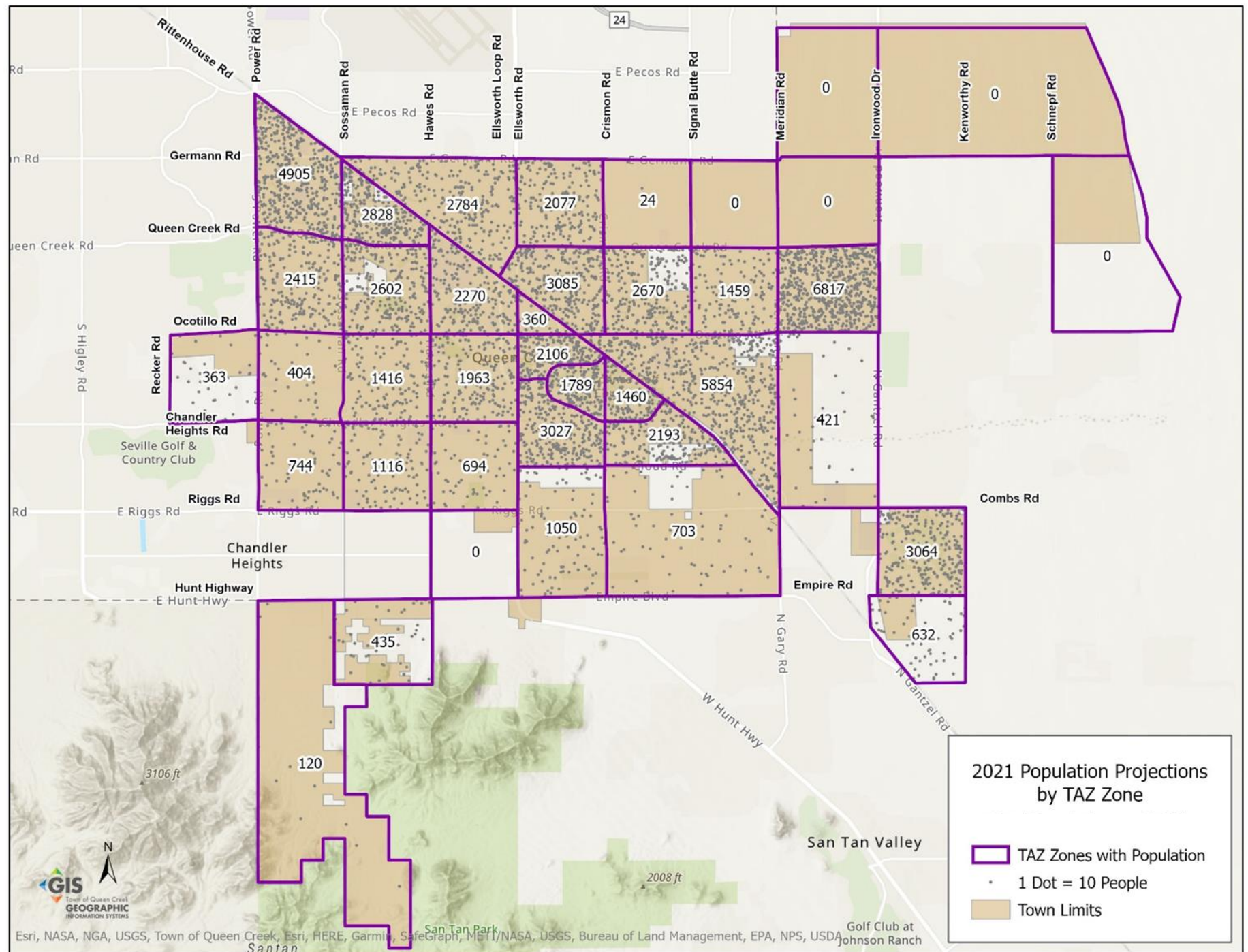
73%  
White Collar



15%  
Blue Collar

# 2021

## Population 66,275

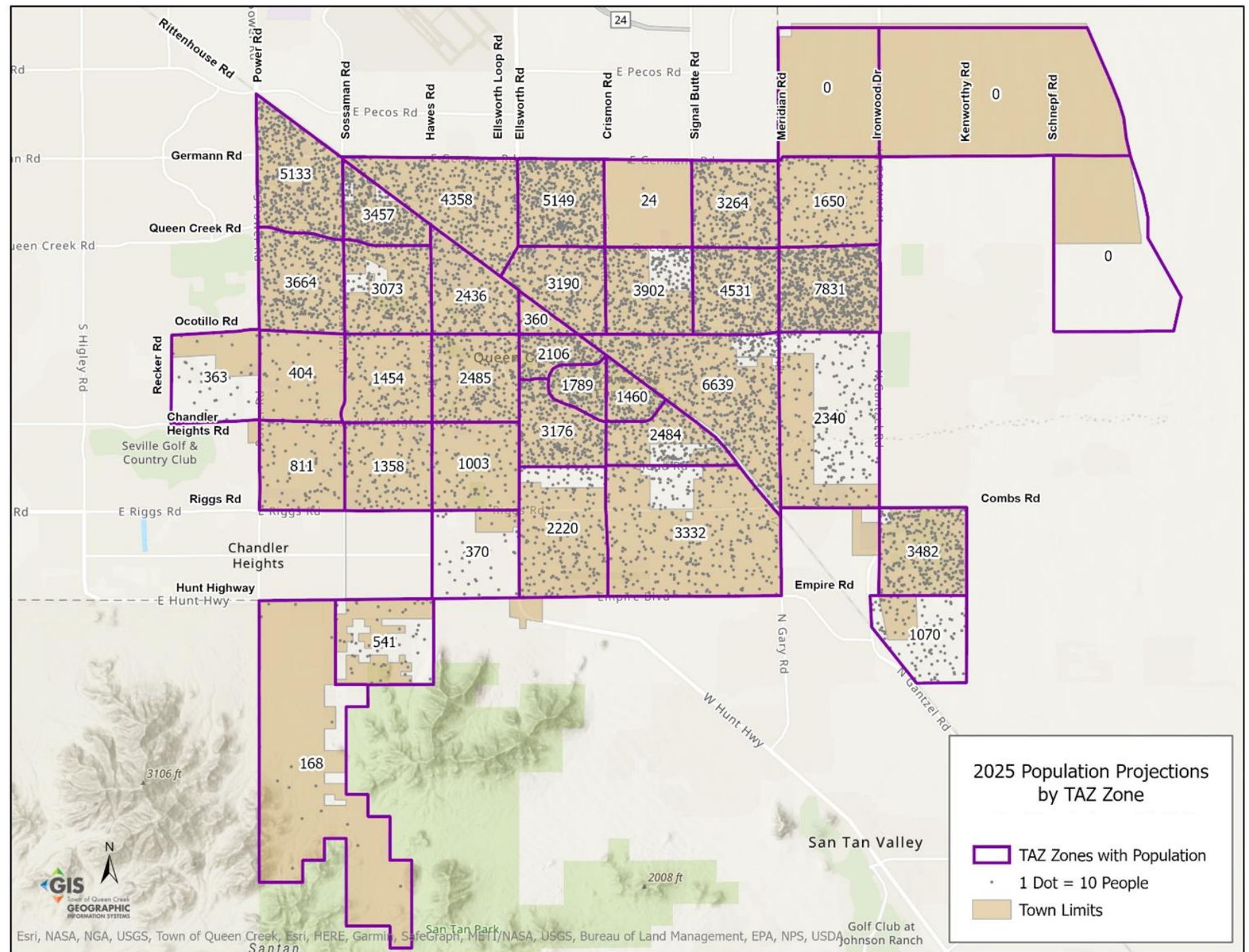




# 2025

## Population

### 93,500

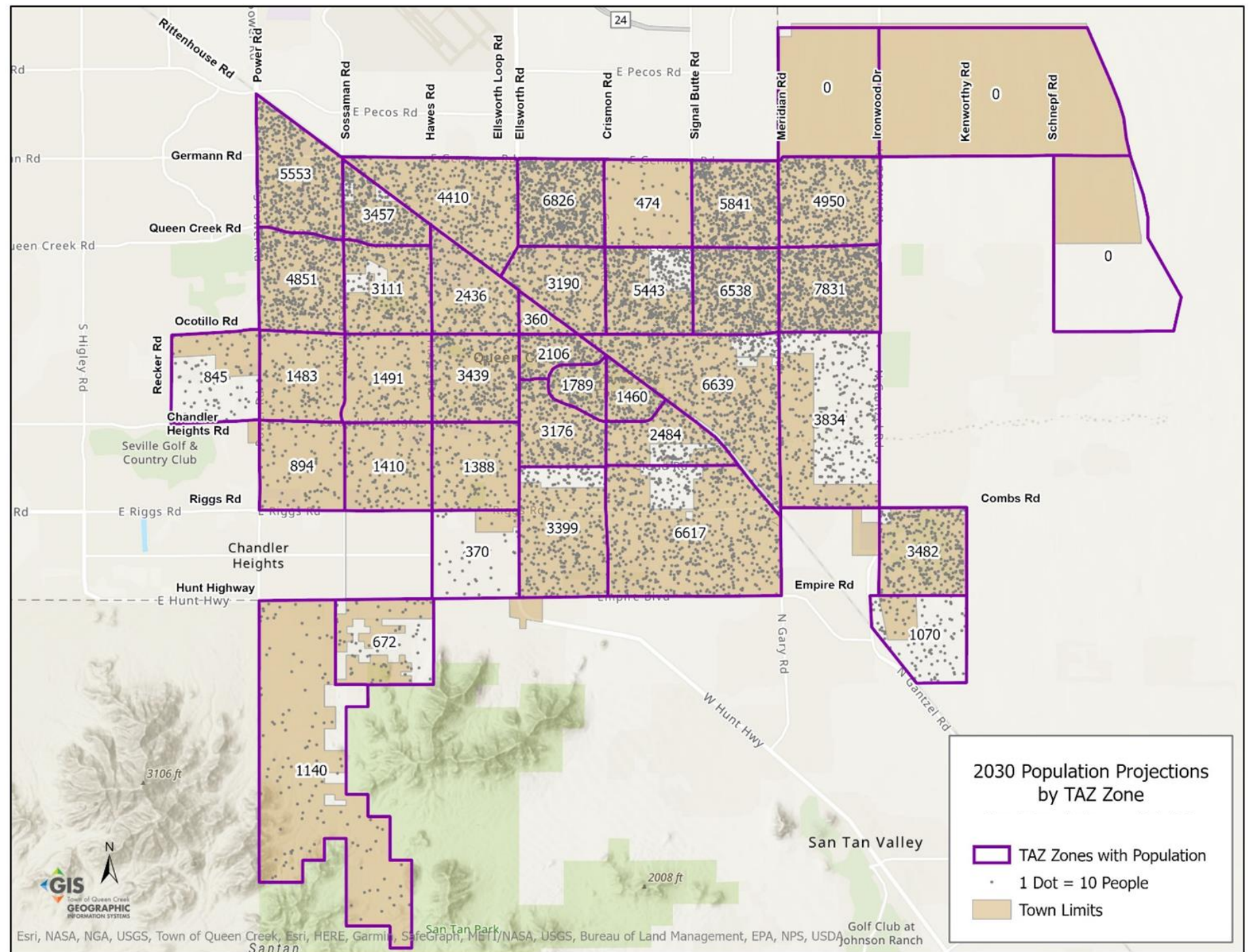




# 2030

## Population

### 116,900





**Population  
~150K**



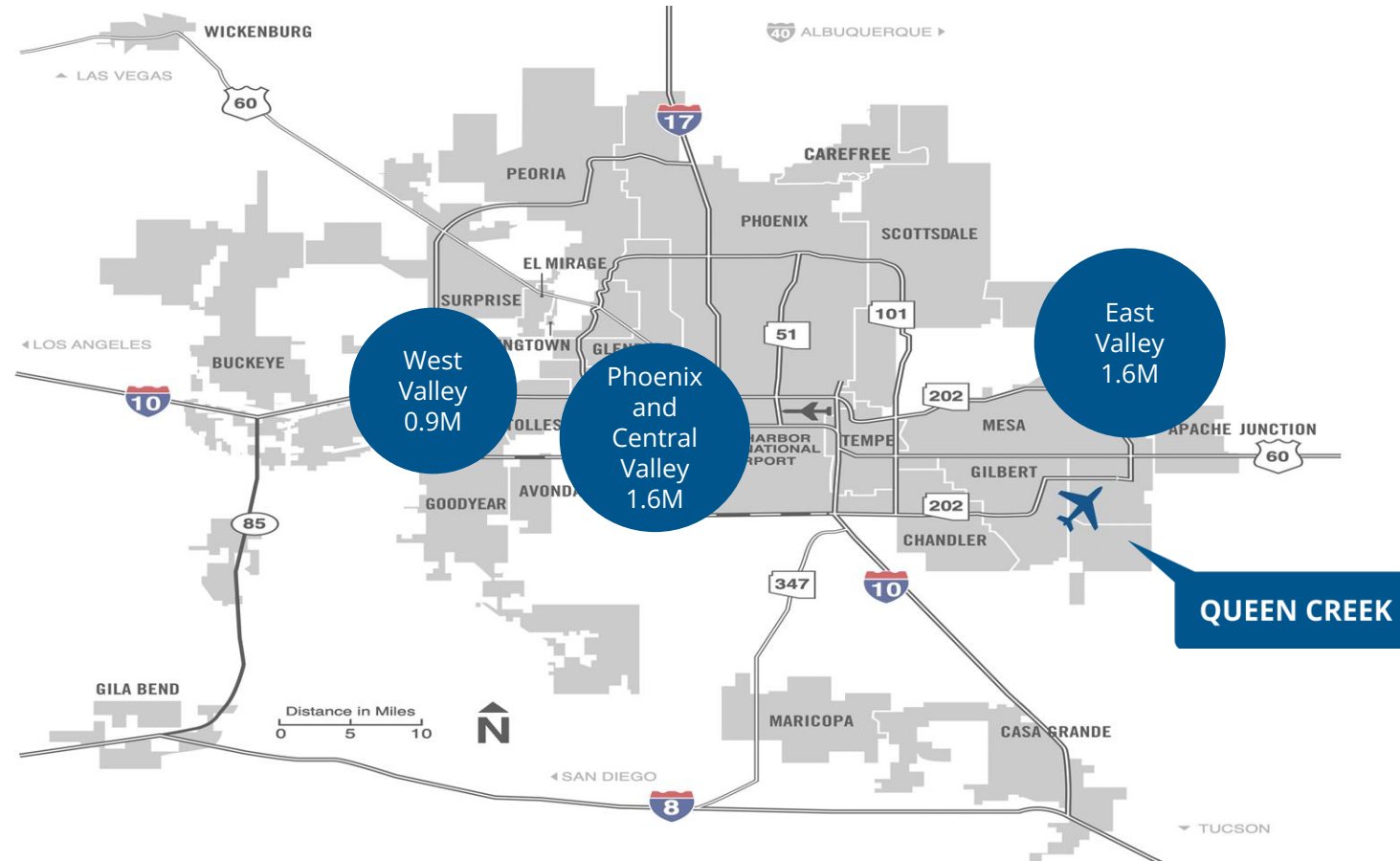
TOWN OF  
**QUEEN CREEK**  
ARIZONA

WORKFORCE

**INVESTTHEQC**



# Greater Phoenix Area Population (2021): 4.2M



QUEEN CREEK

# TOP EMPLOYERS FOR QUEEN CREEK RESIDENTS



The top employers of Queen Creek residents are Intel and Boeing.

Manufacturing industry is 3<sup>rd</sup> largest for Queen Creek workers.

## Top Employers for Queen Creek Residents Working Outside of Queen Creek

EMPLOYER NAME	SITE NAME	TOTAL EMPLOYEE HEADCOUNT
1 Intel Corporation	Ocotillo Campus	5,408
2 Intel Corporation	Chandler Campus	5,937
3 Boeing Co.	Mesa Plant	4,600
4 State Farm Insurance	Marina Heights	6,550
5 Bank of America	Chandler-AZ1-800,801,804,805	3,076
6 Banner Health	Banner Baywood Medical Center	2,170
7 City of Chandler	City Complex	1,170
8 Banner Health	Banner Desert Medical Center	4,866
9 Dignity Health - Gilbert	Mercy Gilbert Medical Center	850
10 PayPal, Inc. - Chandler	PayPal - Chandler	1,527



**73%**  
White Collar



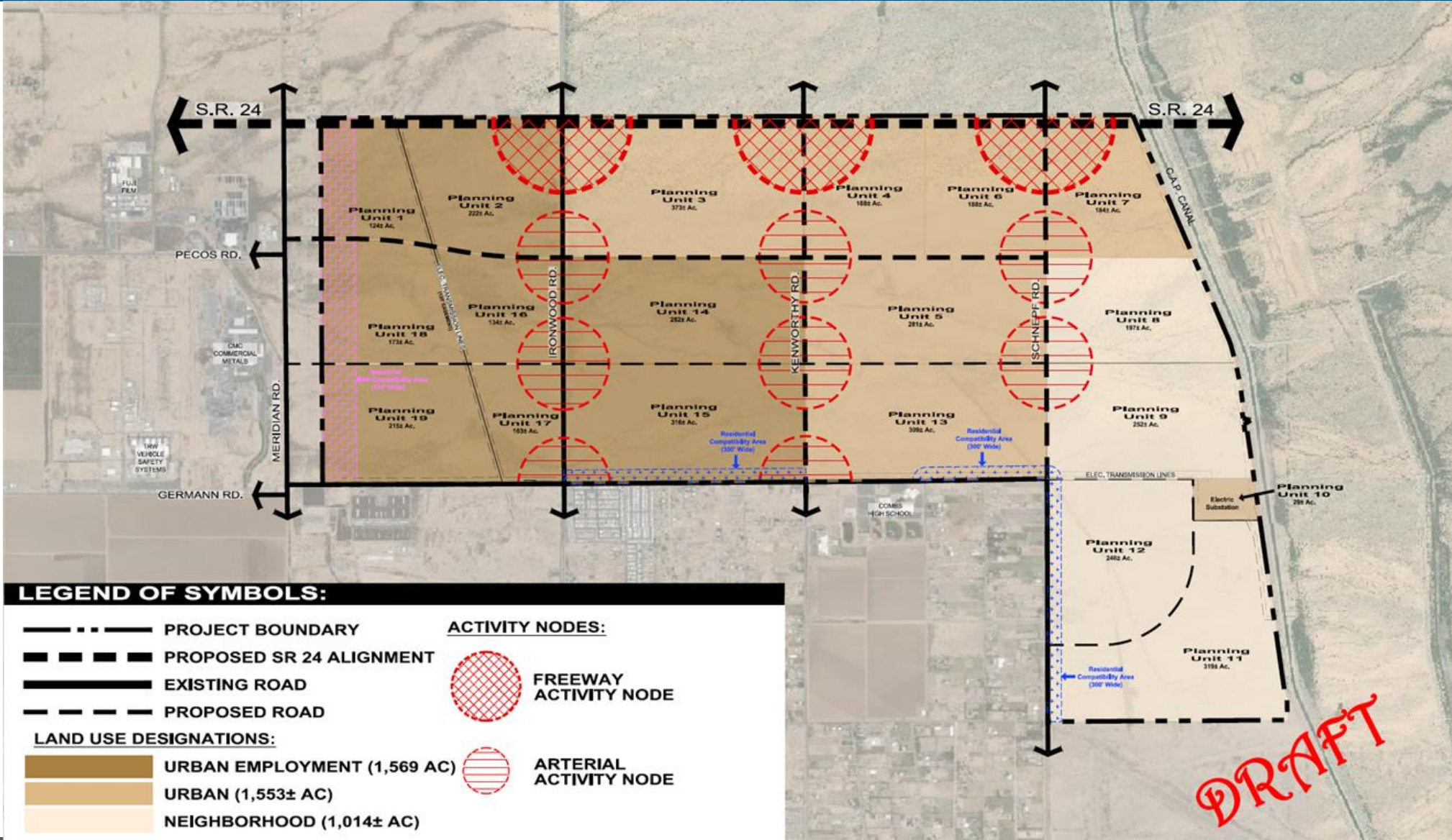
**15%**  
Blue Collar

- ✓ The Town of Queen Creek is home to several A-rated schools within the six public school districts, and private and charter schools.
- ✓ School districts are expanding and bringing new schools to Queen Creek in response to the community's growth. Queen Creek Unified School District is experiencing 20% growth.
- ✓ ASU Polytechnic, Chandler-Gilbert Community College, the Communiversiity, and Central Arizona College ensure workforce preparedness for the East Valley.
- ✓ ASU's Polytechnic Campus has just under 10,000 students.



Central  
Arizona  
College







12 light industrial buildings  
with over 1 million total square  
feet

Footprints for each building range  
from 61,300 to 109,500 square  
feet

Located near the South East  
Corner of Signal Butte and  
Germann

## GERMANN COMMERCE CENTER

Germann Rd./Signal Butte Rd. & Meridian Rd.

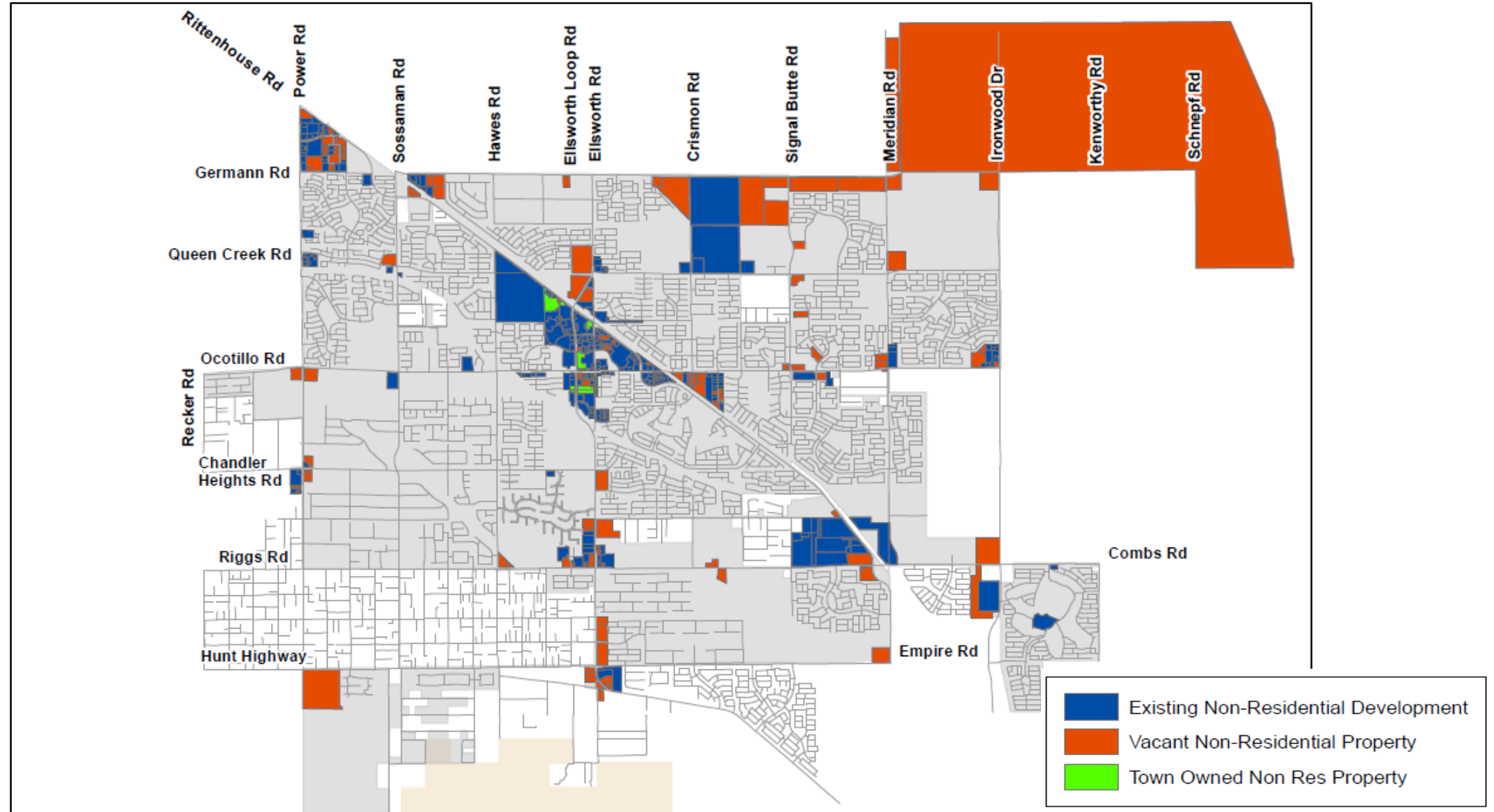
## FOR LEASE

or Build to Suit



  
**THOMPSON  
THRIFT**  
A REAL ESTATE COMPANY

# Queen Creek: Non-Residential Development





**Product (Site and Building) Development** – Identify real estate and market to attract high-impact projects/development

**Town Center Development** – Focus on awareness, the arts, access, and potential new assets

**Business Attraction/Retention** – Concentrate on programs to attract new business and industry and a plan for retention

**Entrepreneurship/Innovation** – Embrace entrepreneurship and innovation focused on IT/Software startups

**Marketing/Communications** – Engage in more targeted marketing/communications efforts to ensure people know about Queen Creek











# QUALITY OF LIFE





