

QUEEN CREEK, ARIZONA

Strategically located. Available land for development. Highly educated workforce.

InvestTheQC@QueenCreekAZ.gov
[LinkedIn.com/company/QCED](https://www.linkedin.com/company/QCED)
[InvestTheQC.com](https://www.investthetheqc.com)

INVESTTHEQC

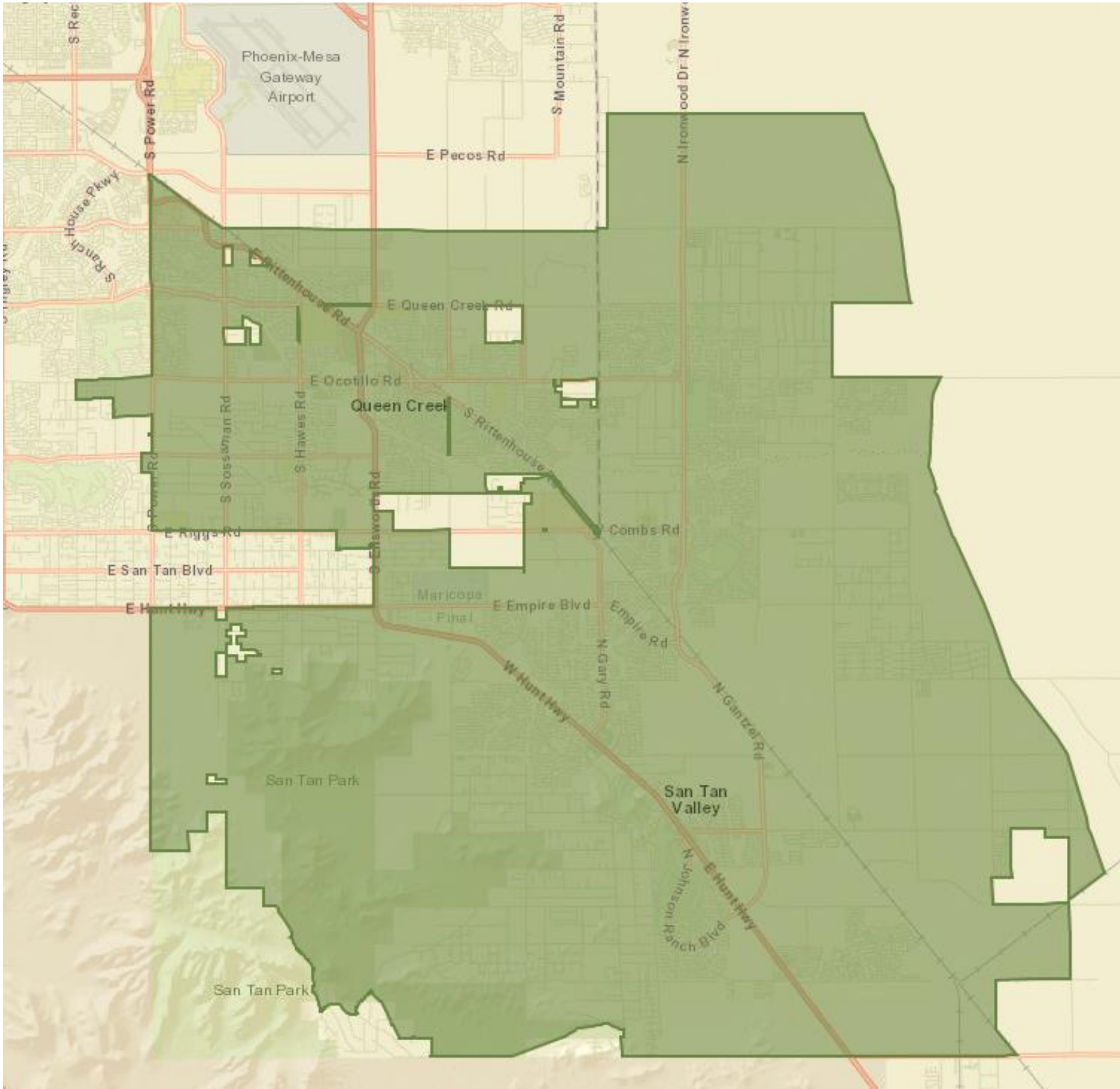
Strategic Location



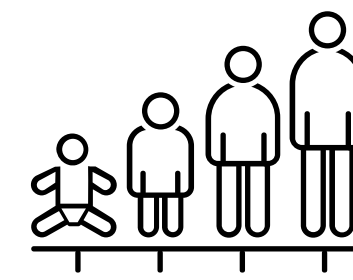
The Trade Area

Queen Creek and San Tan Valley (east and south of Queen Creek) are high-growth communities attracting young families. The area continues to have strong, unmet retail demand. Today, Queen Creek has over 77,000 residents, and San Tan Valley (part of Pinal County) has over 105,000 residents.

Demographic Summary	2022	2027
Population	172,945	183,270
Households	53,154	56,493
Families	43,069	45,748
Median Age	31.1	30.4
Median Household Income	\$91,353	\$106,962



Accolades and Demographics



1

#1 Fastest Growing Municipality in Arizona

#1 Best City in the West to Raise a Family

2x

Population more than DOUBLED in eight years:

2015: 35,534

2023: 77,000

7

#7 Fastest Growing City in the U.S.

8

#8 Highest Median Household Income in Arizona:

\$111,743

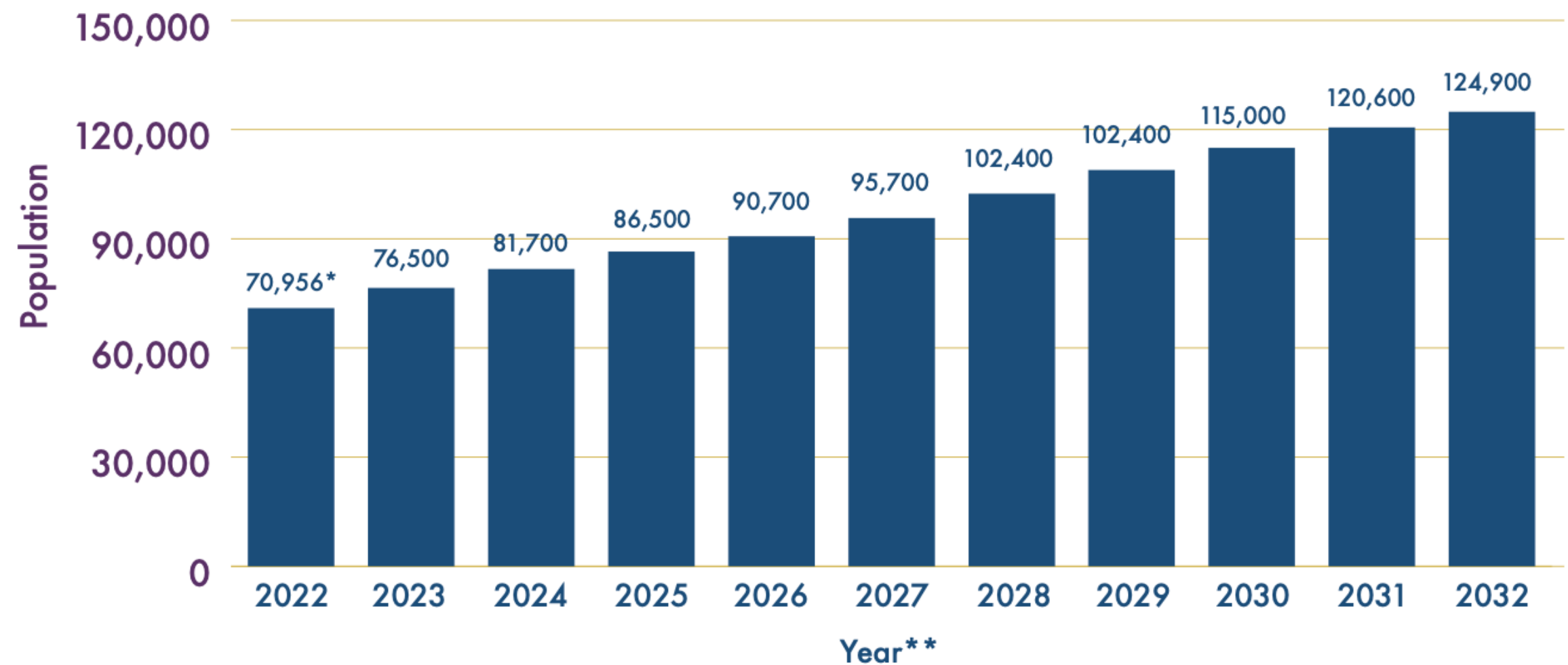
Incorporated in
1989,
Queen Creek's
population is now
over 29 times the
size it was then.

29

1990: 2,639

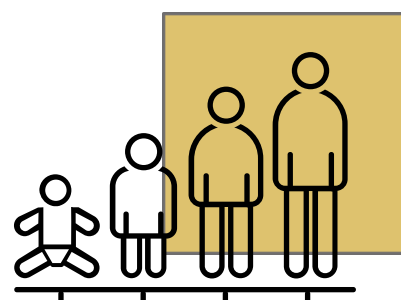
2023: 77,000

Demographics



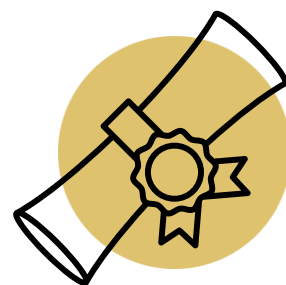
\$147,889

**Average Household
Income**



32

Average Age



46.5%

**Bachelor's Degree
or Higher**



6%

**Average Growth Rate
Over the Next 10 Years**



150K

Buildout Population

Housing Activity

Single Family Permit activity (by calendar year):

- 2020 - 1,985 permits
- 2021 - 1,947 permits
- 2022 - 1,301 permits
- 2023 - 864 permits (as of August 2023)
- 2023 - averaging 150/month

Multifamily units:

- Existing - 1,174
- Under Construction - 1,749
- Site Plan Approved - 791

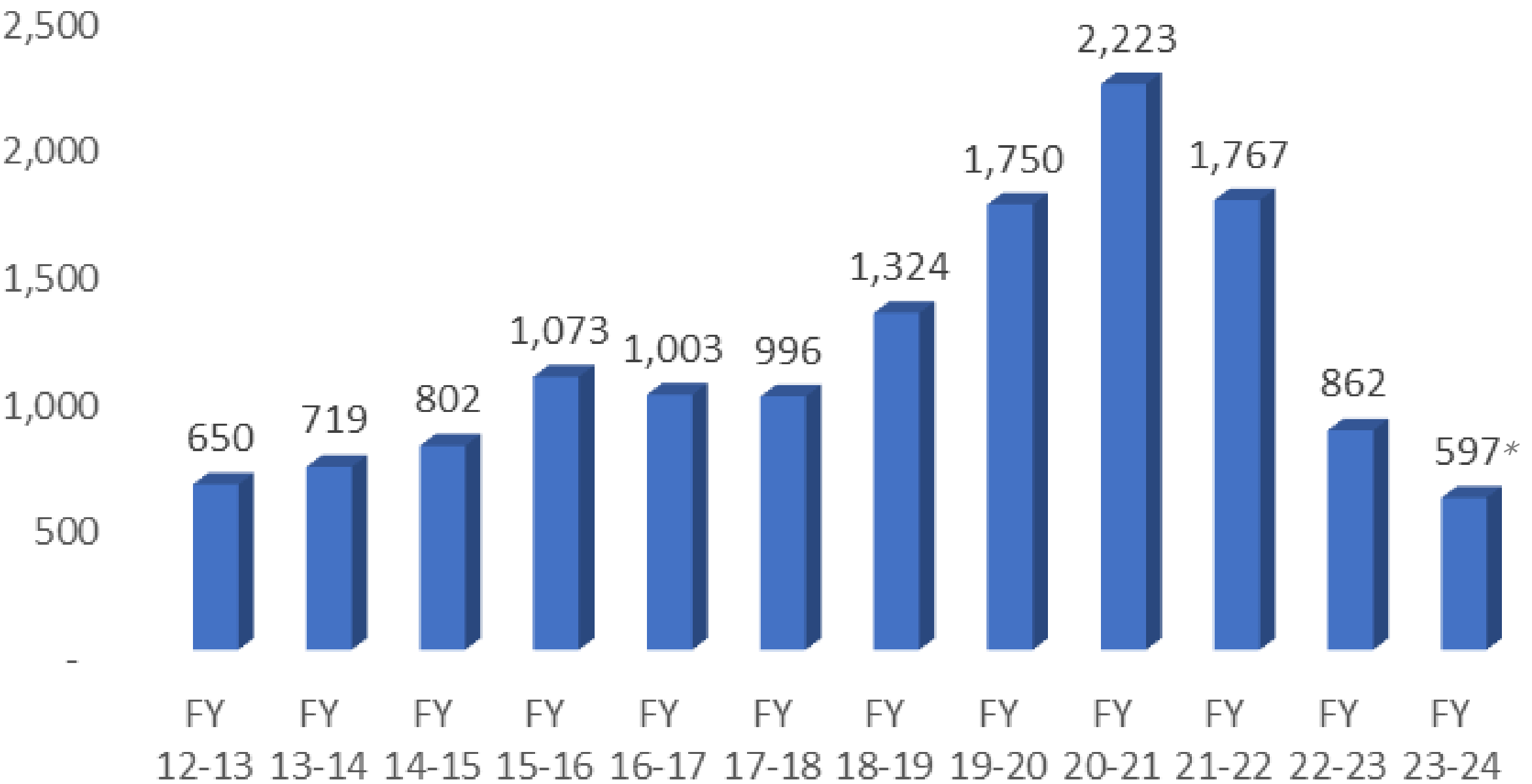
Total = 3,714



92% of occupied homes are owner-occupied.

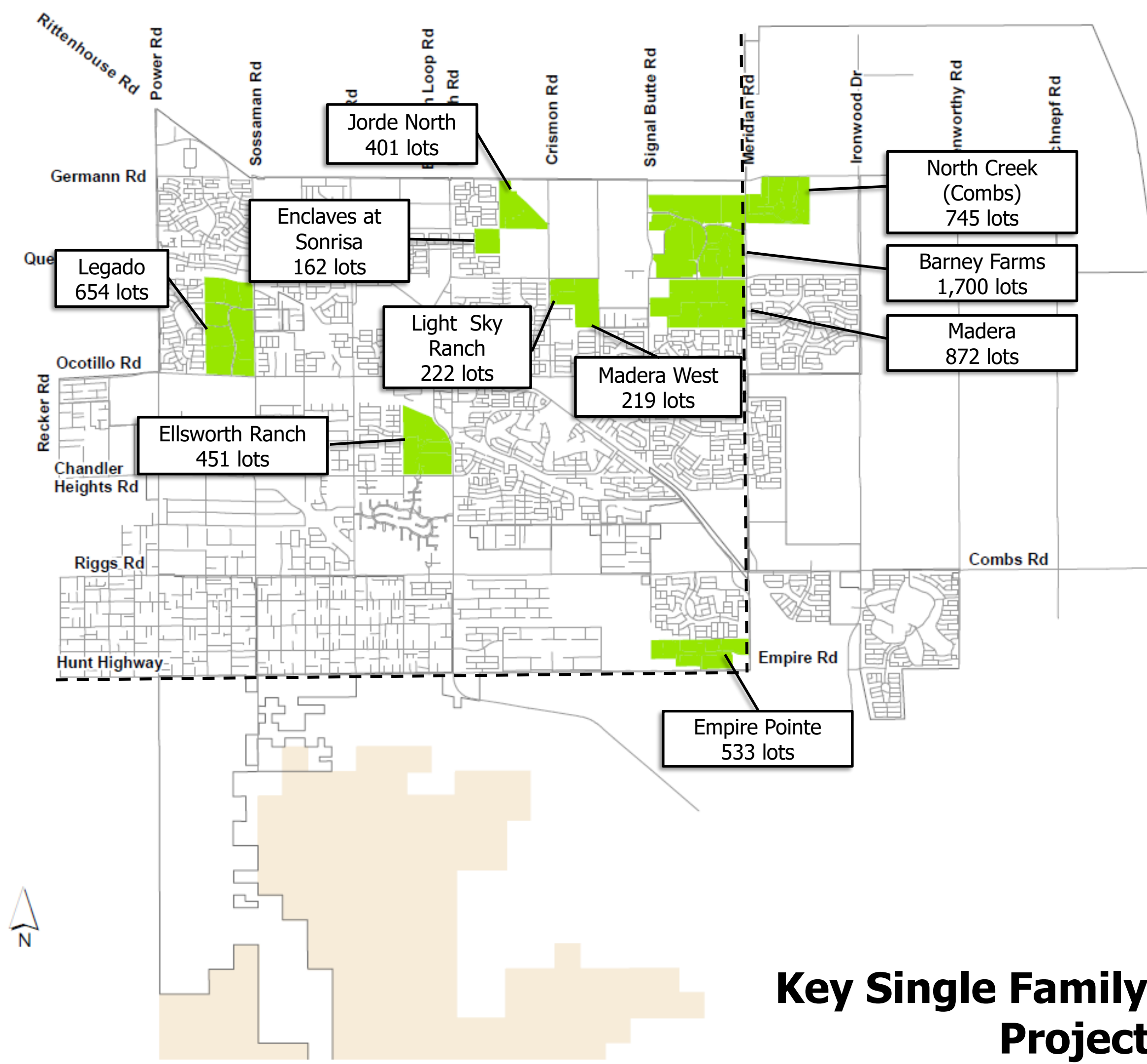


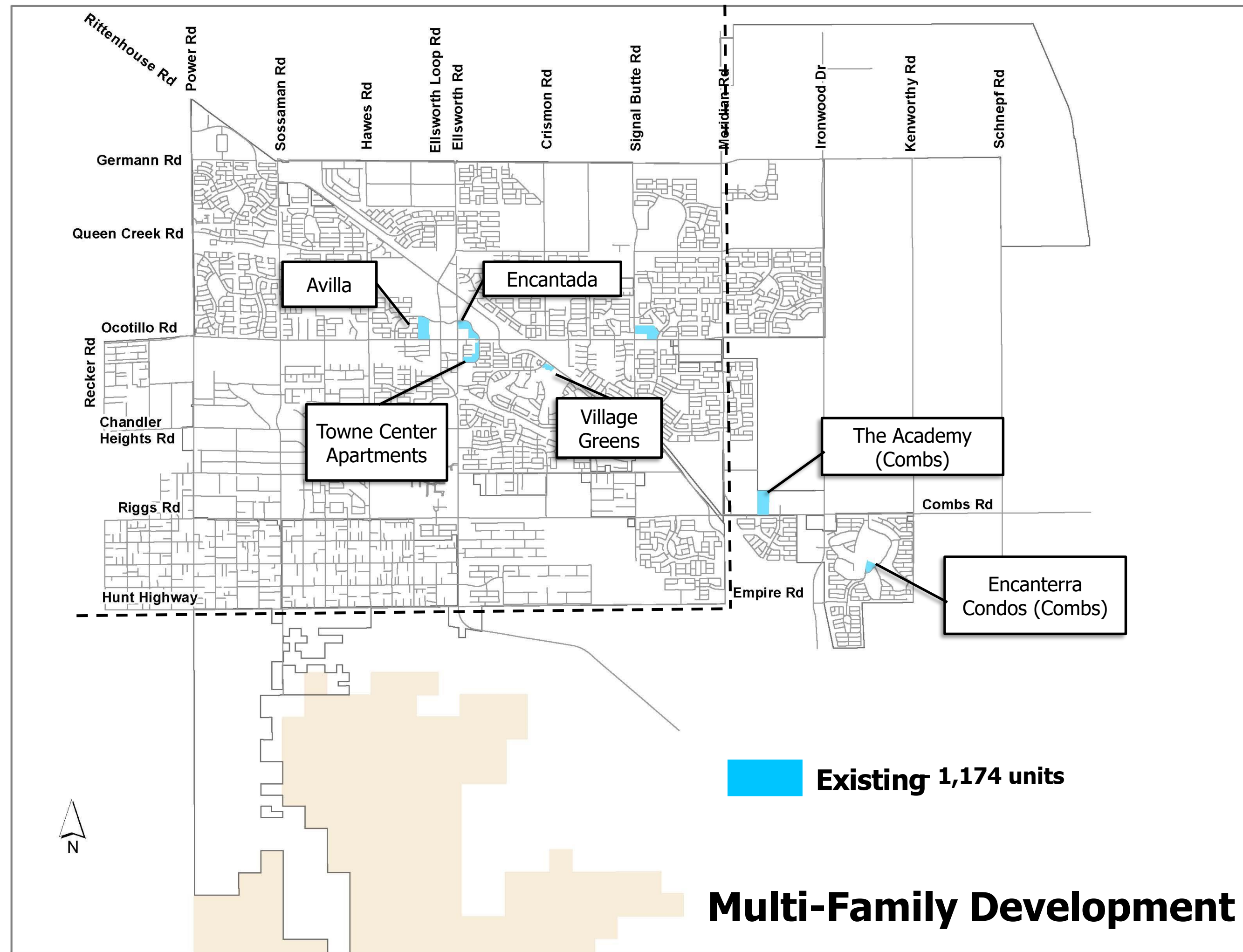
Single Family Permits - By Fiscal Year

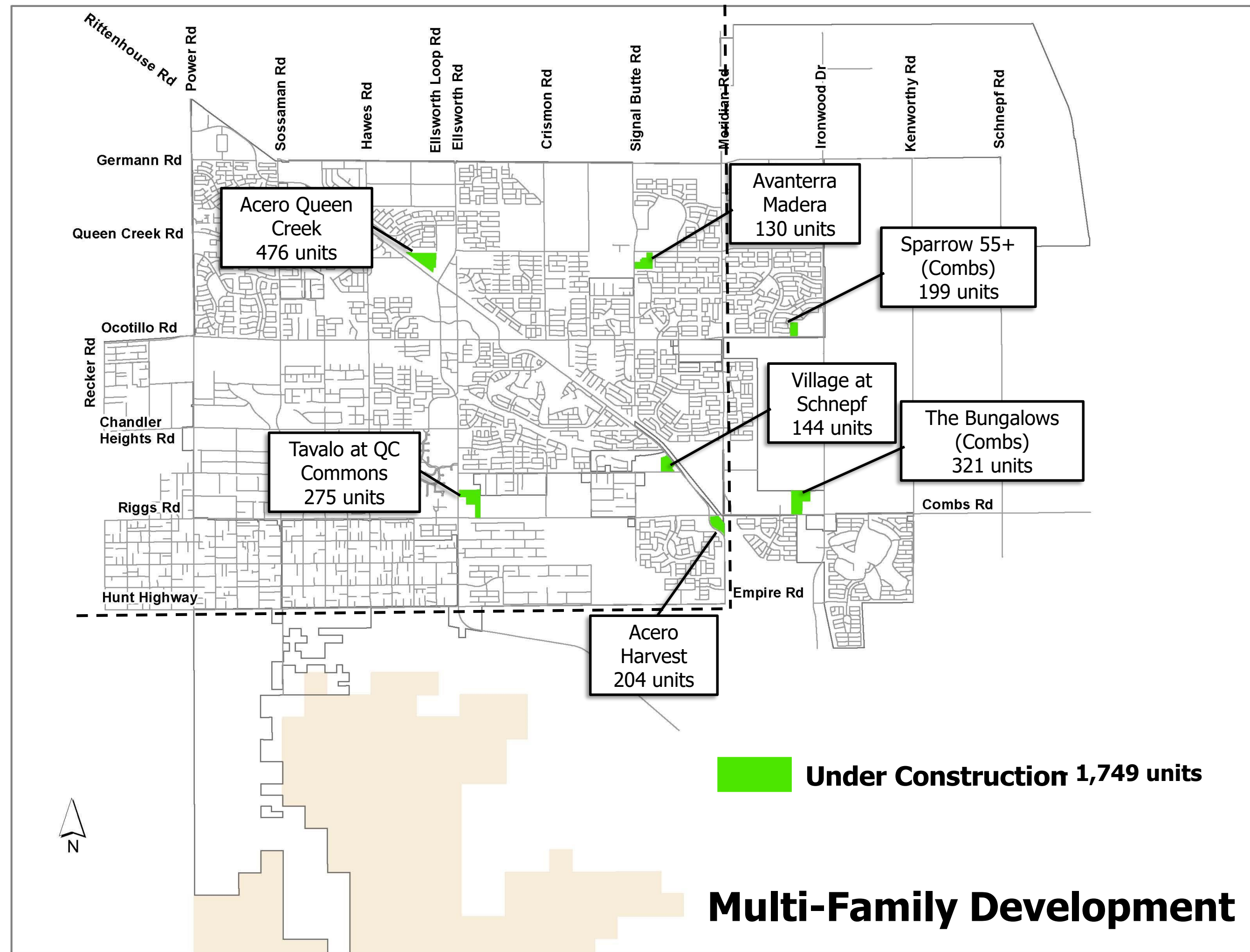


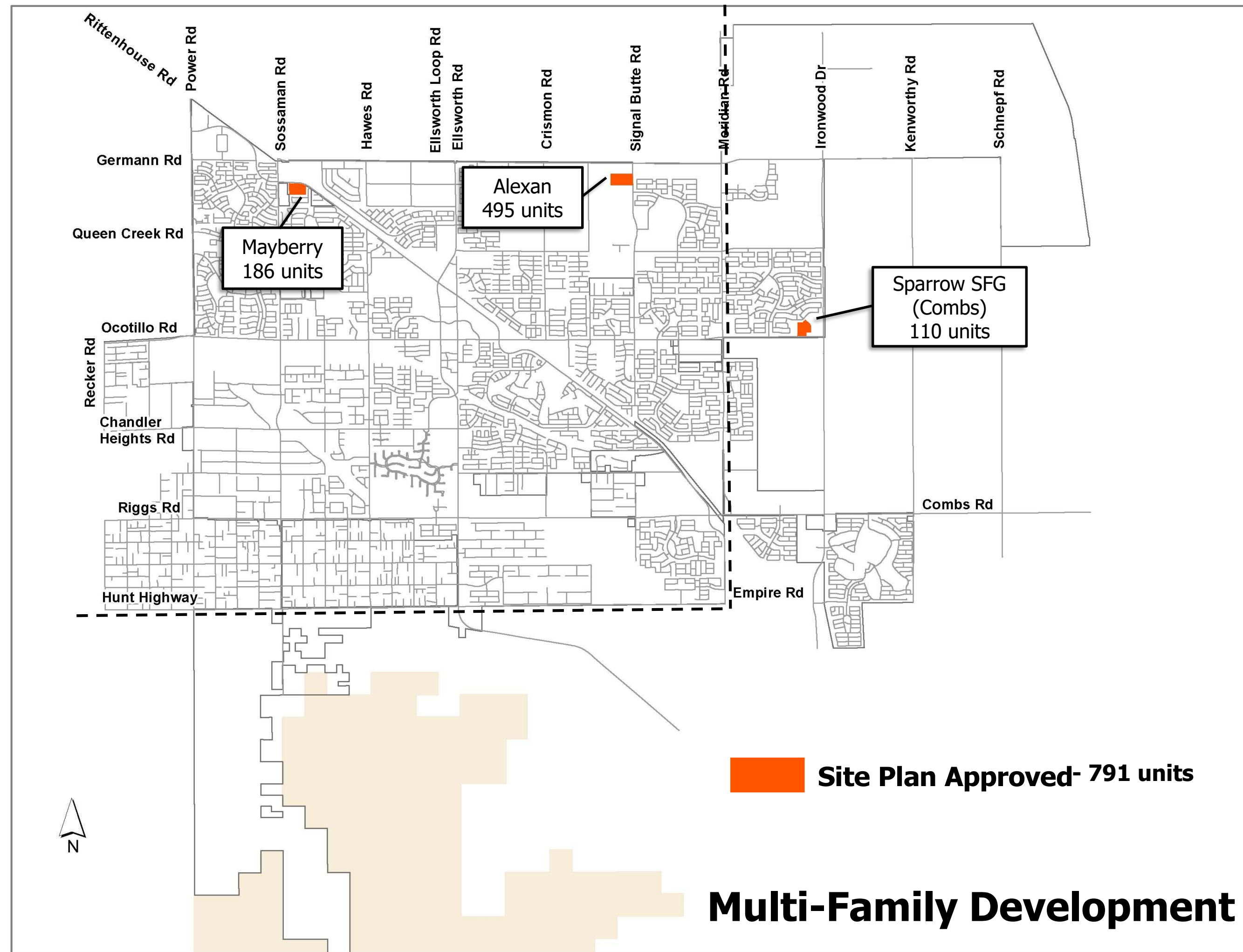
Single-Family Permit Projections FY24 - 800

**Through October 2023*



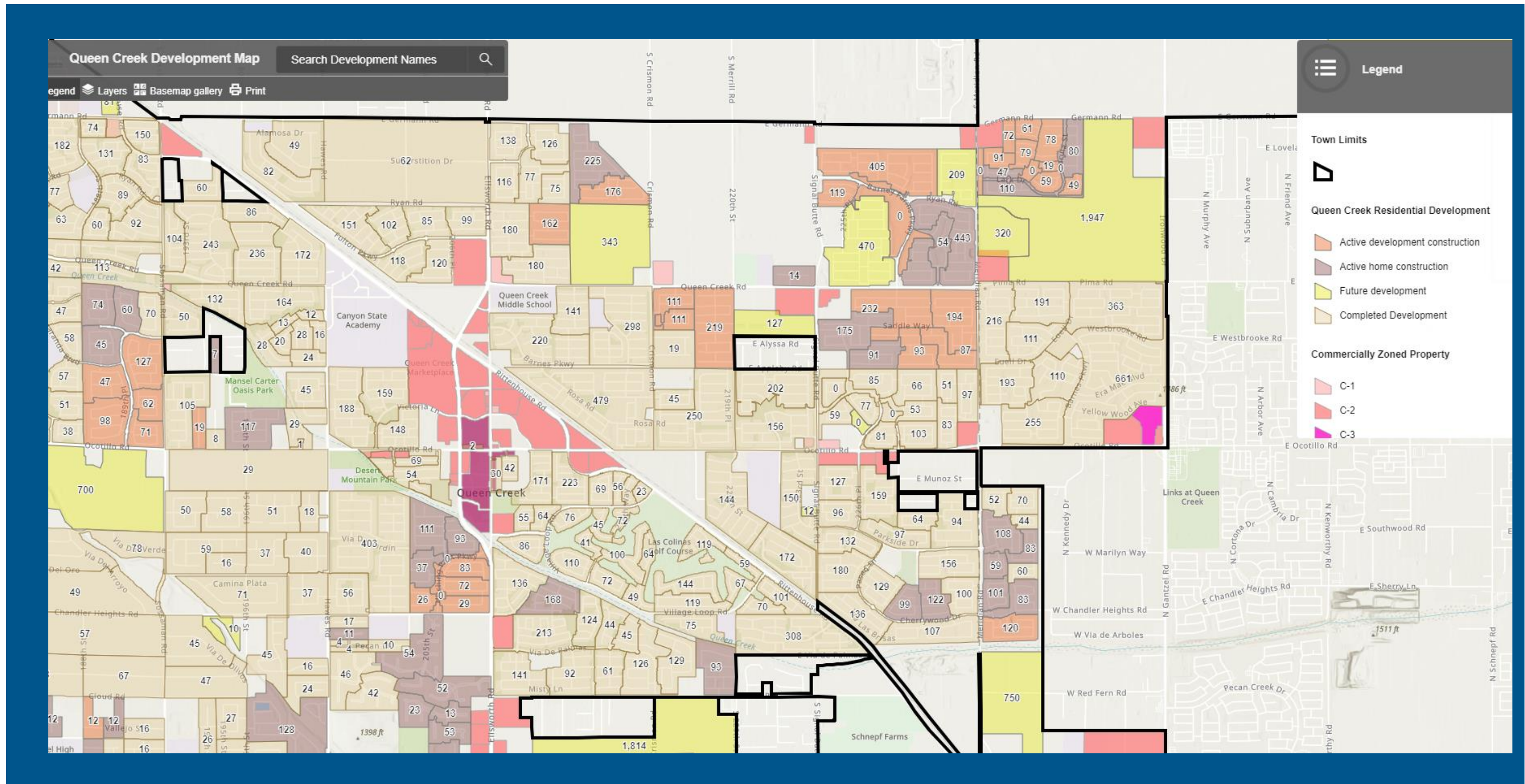






Interactive Residential Growth Map

<https://investtheqc.com/demographics/>



Leading the EV & Renewable Energy Revolution

LG ENERGY SOLUTION TO INVEST \$5.5 BILLION TO BUILD BATTERY MANUFACTURING COMPLEX IN QUEEN CREEK

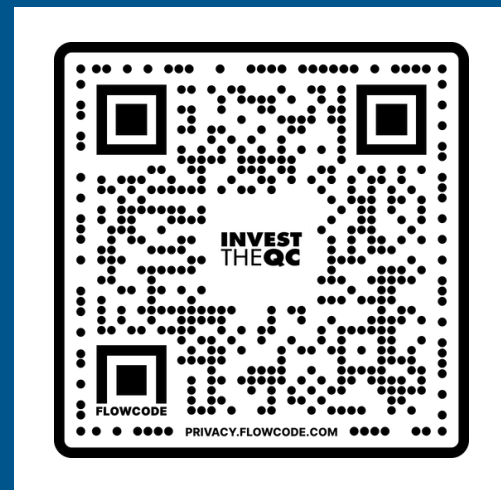
The complex marks the largest single investment for a stand-alone battery manufacturing facility in North America, creating thousands of jobs

QUEEN CREEK, AZ (March 24, 2023) – [LG Energy Solution](#) (LGES), a leading global manufacturer of lithium-ion batteries for electric vehicles, mobility, IT, and energy storage systems, today announced it will invest a total of \$5.5 billion to build a battery manufacturing complex in Queen Creek, Arizona. The complex will consist of two manufacturing facilities – one for cylindrical batteries for electric vehicles (EV) and another for lithium iron phosphate (LFP) pouch-type batteries for energy storage systems (ESS). The investment represents the largest single investment ever for a stand-alone battery manufacturing facility in North America.

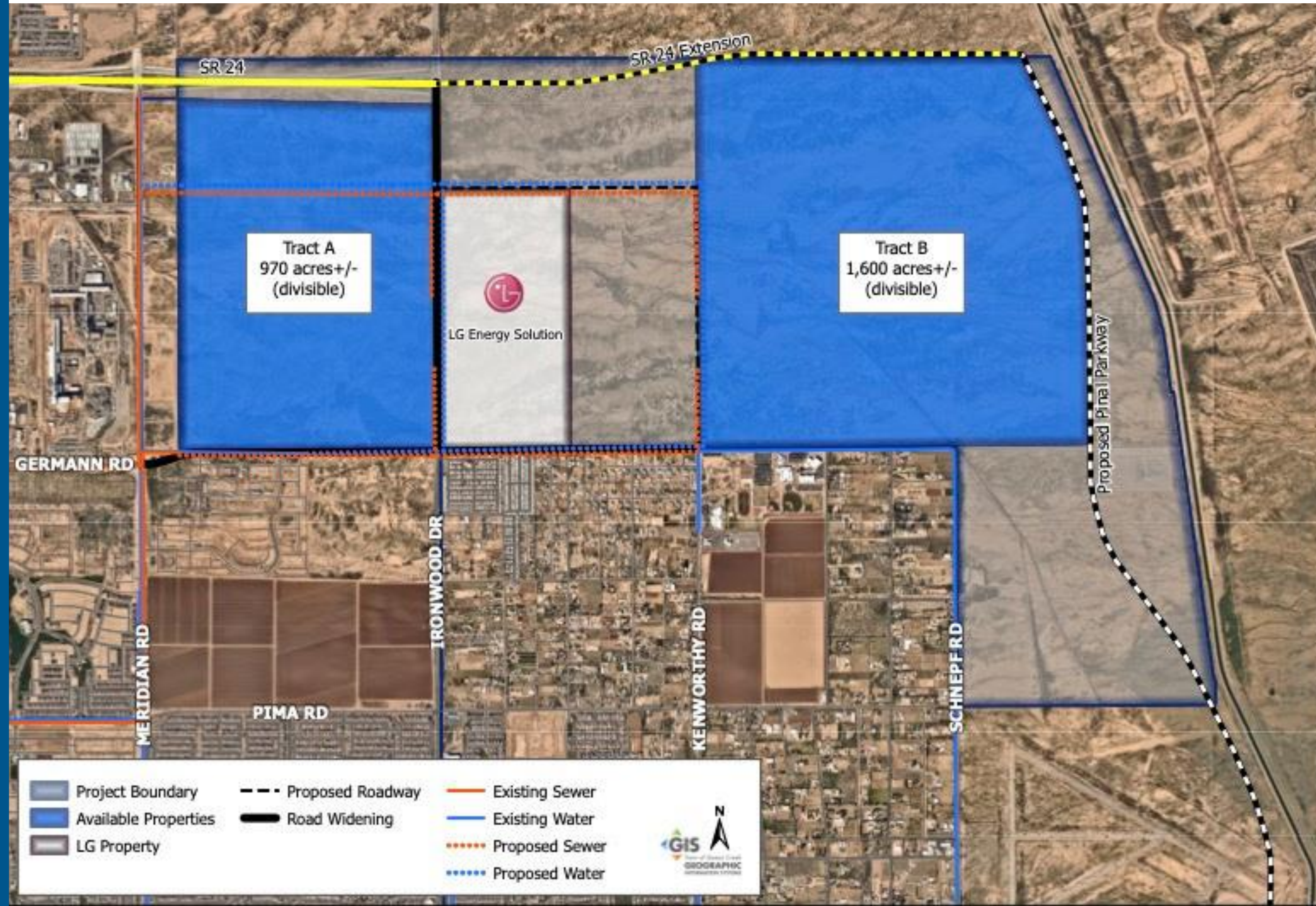


3,500+ Acres for Development

To see a full list of available industrial properties and related infrastructure and amenities, please scan the QR code below.



InvestTheQC.com/industrial/

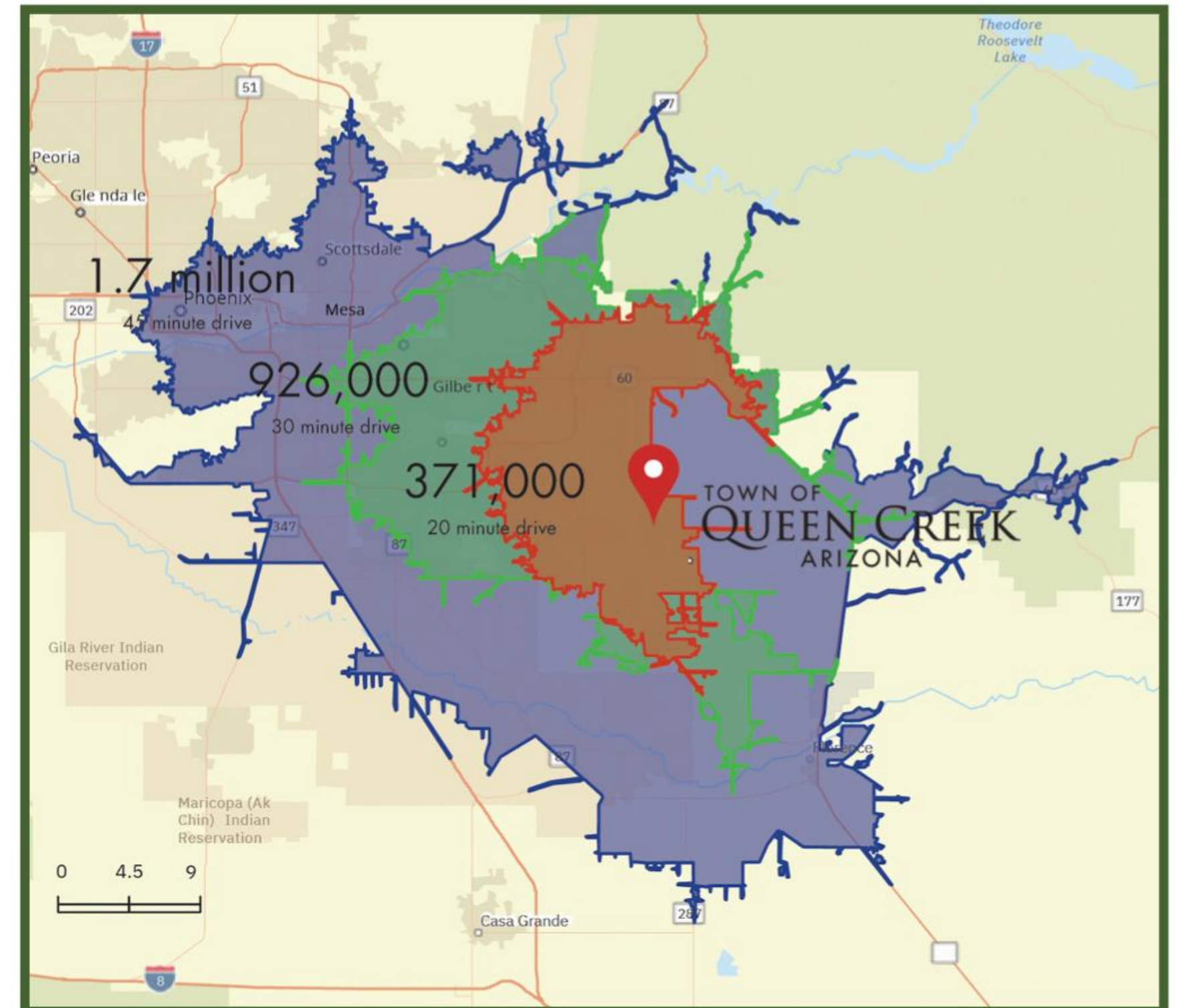


Workforce

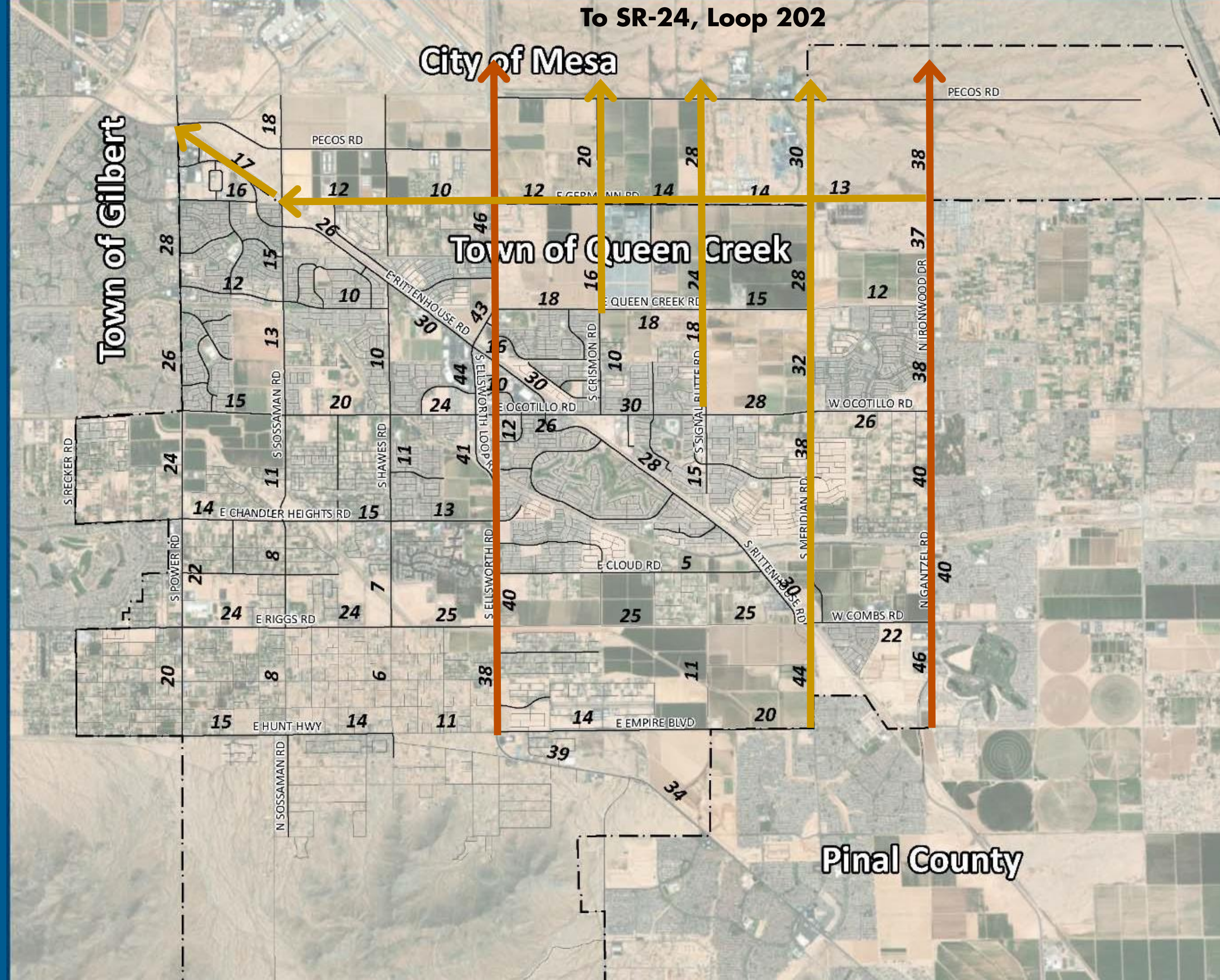
Several excellent institutions of higher education are nearby Queen Creek, ensuring the right partnerships for future companies, including: Arizona State University, Chandler-Gilbert Community College, Central Arizona College, and the Communiversity at Queen Creek.

ARIZONA@WORK serves both Maricopa and Pinal County areas of Queen Creek and has no-cost workforce development programs to support businesses in finding the talent they need.

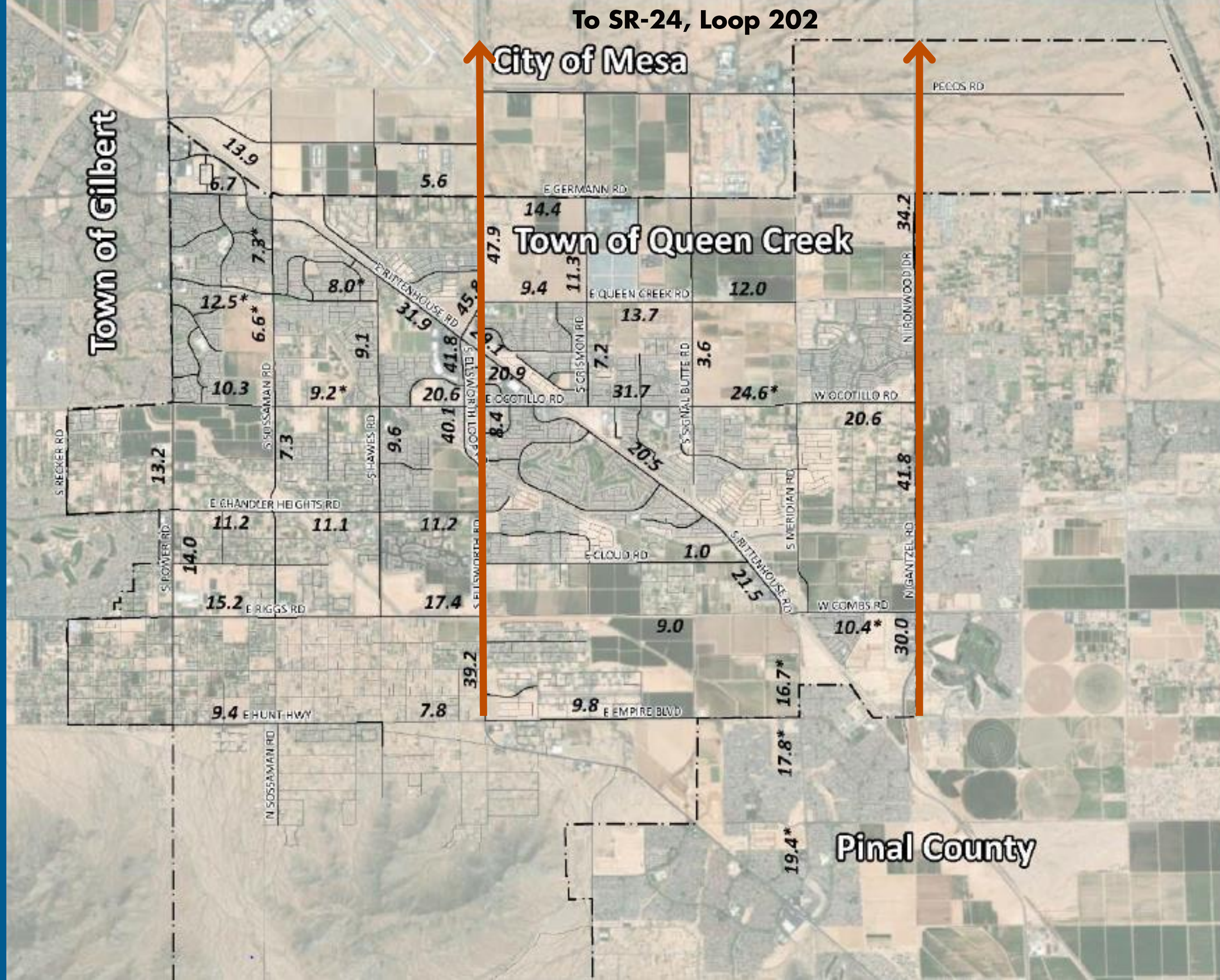
1.8 million people within a 45-minute drive



Future Traffic Counts (2040)



Traffic Counts (2020)



TOWN OF
QUEEN CREEK
ARIZONA



Thank You

INVESTTHEQC